

HOUSEHOLD HAZARDOUS WASTE Collection Program

2024/2025 Annual Report



HOUSEHOLD HAZARDOUS WASTE Collection Program

2024/2025 Annual Report



THE FOLLOWING CENTRAL SAN STAFF CONTRIBUTED TO THE PREPARATION OF THIS REPORT :

Geoff Niswander

David Wyatt

PROGRAM CONTACTS :

David Wyatt

Household Hazardous Waste Program Administrator

(925) 335-7714

dwyatt@centralsan.org

HHW PROGRAM INFORMATION :

(800) 646-1431

www.centralsan.org

**FISCAL YEAR 2024-25
Household Hazardous Waste Collection Program**

Annual Report

Table of Contents

TABLES AND FIGURES.....3
INTRODUCTION4
RESIDENTIAL PARTICIPATION5
SAN RAMON DOOR-TO-DOOR COLLECTION PROGRAM..... 10
WASTE VOLUMES 12
POLLUTION PREVENTION EFFORTS 17
SMALL BUSINESS PROGRAM.....22
PUBLIC EDUCATION AND OUTREACH23
REVENUE AND EXPENSES.....24

Appendices:

- AI** **California Integrated Waste Management Board Form 303**
- All** **Conditionally Exempt Small Quantity Generator Disposal Charges**
- Alll** **HHW Program History – 1997 to Present**

FISCAL YEAR 2024-25
Household Hazardous Waste Collection Program

Annual Report

TABLES AND FIGURES

Table	Description/Title	Page No.
RP-1	Residential Participation by Community	8
RP-2	Total participation by Community	9
SR-1	San Ramon Door-to-Door Program	11
WC-1	Estimate of Amount of Waste Collected by Community	16
PP-1	Mercury Collection Summary	17
PP-2	Pollutants of Concern Summary	18
PP-3	Pharmaceutical Collection Summary	19
WD-1	Quantity of Landfill Diverted Waste	21
SB-1	Small Business Participation by Community	22
SB-2	Small Business Appointment Statistics	23
RE-1	FY 2024-25 Summary of Estimated Cost Savings/Rebates	25
RE-2	HHWCF Summary of Revenue and Expenses	29
RE-3	HHW Facility Capital Expenditure Amortization Schedule	31
Figure		Page No.
RP-1	HHWCF Participation: Participants per Month	6
RP-2	HHWCF Participation: Average Participants per Day of Week	7
RP-3	HHWCF Participation: Average Participants per Day	7
WC-1	Pounds of Waste per Participant	12
WC-2	Waste Disposal per Month	13
WC-3	Breakdown of Waste Shipped by Weight (%) of Major Categories	14
WC-4	Waste Management Method Breakdown (%) of Waste Processed by Weight	15
RE-1	Cost per Household Broken Down by Expense	26
RE-2	Operating Cost per Household	27
RE-3	Operating Cost Per Pound of Waste Collected	27
RE-4	Participation and Expenses	28

INTRODUCTION

This summary report of the Household Hazardous Waste (HHW) Program for fiscal year (FY) 2024-25 presents the program's participation levels, an analysis of the hazardous waste delivered to the facility, and the associated costs of the program. The program's high level of participation, along with the significant amount of hazardous waste collected and properly managed each year, demonstrates the benefits to both public health and the environment.

Background

In 1995, it was recognized and resolved by all central Contra Costa County cities¹, the Central Contra Costa Solid Waste Authority, Central Contra Costa Sanitary District (Central San), and co-sponsor Mt. View Sanitary District (MVSD) that mobile HHW collection events were not efficient or convenient, and that a permanent household hazardous waste collection facility (HHWCF) was needed. In 1997, Central San opened the first permanent HHWCF in Contra Costa County, partnering with its service agreement associates, MVSD, and the cities of Clayton, Concord, and San Ramon.

Pollution Prevention

Central San's core function is to operate a municipal wastewater collection system and a 53.8-million-gallons-per-day-rated treatment plant (plant). The wastewater collection system covers 145 square miles and includes approximately 1,500 miles of sewer pipes. In FY 2024-25, the plant treated nearly 12 billion gallons of wastewater.

MVSD's plant serves an estimated population of 21,900, with approximately 270 businesses in its 4.7 square mile service area, which is served by 73 miles of sewer collection system. MVSD reclaims approximately 450 million gallons of water for 21 acres of wetland habitat annually. Both Central San's and MVSD's plants are designed to treat and prevent biological waste from entering our waterways. However, chemicals must be removed prior to entering these plants to maintain the health of the biological treatment train. This is how HHW collection and proper disposal benefit Central San and MVSD. Pollution prevention at the source ensures that our plants operate at peak efficiency and eliminates chemical wastes from flowing through treatment processes designed specifically for human waste.

¹ Clayton, Concord, Danville, Lafayette, Martinez, Moraga, Orinda, Pleasant Hill, San Ramon, and Walnut Creek

RESIDENTIAL PARTICIPATION

The HHW Collection Program celebrated the completion of its 27th year of service in October 2024. The HHW Program serves central Contra Costa County, which comprises 199,704 households with a population of approximately 520,442. Program participation for FY 2024-25 was 16.2 percent (32,430 residential customers) across the service area, which is up from 15.8 percent in FY 2023-24. The arithmetic mean of HHW participation (count and percentage of total) and total households in the HHW service area for the previous 10 fiscal years was 32,583 customers, with a participation rate of 16.6 percent, and 195,484 total households, respectively.² The total number of occupied households within the service area essentially negated last year's gain, decreasing by 0.4 percent in FY 2024-25 from 200,435 to 199,704.

Throughout this report, FY 2018-19 figures are used to compare pre-COVID and post-COVID levels of participation, waste volumes, and other performance indicators with those before the pandemic. Participation appears to have stabilized at a post-pandemic norm of around 32,000 to 33,000 per year. However, this is only an average based on four years of data (2021-2025) and should not be treated as an adequate sample size. Additional years of data are needed to establish a trendline with any degree of confidence. Variables to consider moving forward include, but should not be limited to, total number of occupied households in service area (Increased ~7,100 since the FY 2018-19 report) and the cost of goods and services compared to the pre-pandemic era (FY 2015-16 to FY 2018-19 vs FY 2021-22 to FY 2024-25) e.g., a higher average federal fund rate, higher average price of gasoline and home value across the state.³ The inference of which would be that customers are less likely to purchase new products to replace older (still viable) products if their purchasing power is lower than what they are comfortable with or accustomed to.

We are experiencing a trend of decreasing waste volumes without a proportional decrease in participant traffic, as over 90 percent of participants have used the program at least once since opening in 1997. This appears to follow initial program expectations as residents purge waste more frequently; they are also more educated about buying less and not storing

² A 10-year standard deviation of 2,364 customers, 1.31 percent HHW participation, and 2,960 total households was calculated as well.

³ December Federal Fund Rate Averaged 1.09% vs 3.50% (Source: St Louis FED)
Average Price for one gallon of gasoline across the state \$3.16 vs \$4.76 (Source: EIA)
CA Housing Prices Indexed to 1997: 279.2 vs 428.2 (Source: St Louis FED)

chemicals as they once did. Decreased waste volumes can also be attributed to electing to use a half-full can of paint from a previous project, rather than buying a new product, then disposing of the remaining leftovers (less than half full but not empty) at the HHW facility. If there is such a correlation, it may only influence waste volumes from durable goods (paint, thinners/solvents, cleaners, fertilizers, pesticides, etc.) and not non-durable goods (light bulbs, batteries, propane cylinders, fire extinguishers, aerosol cans, etc.), as the durable goods can be saved for multiple years of use.

The HHWCF was open to the public and operational for 293 days during FY 2024-25. Seasonal participation patterns continue to reflect their historical norms, with our highest participation occurring in the summer, then tapering off into fall and winter, and steadily increasing from the new year into the spring. The months of June and December were the inflection points of this cycle, serving 3,201 and 1,572 customers, respectively. The reuse room was open for 291 days, serving approximately 15,000 customers. The reuse room was closed for Bring Your Child to Work Day and the annual Employee Appreciation Lunch, while HHW operations remained open as scheduled.

Figure RP-1 compares the monthly HHW program participation across multiple years.

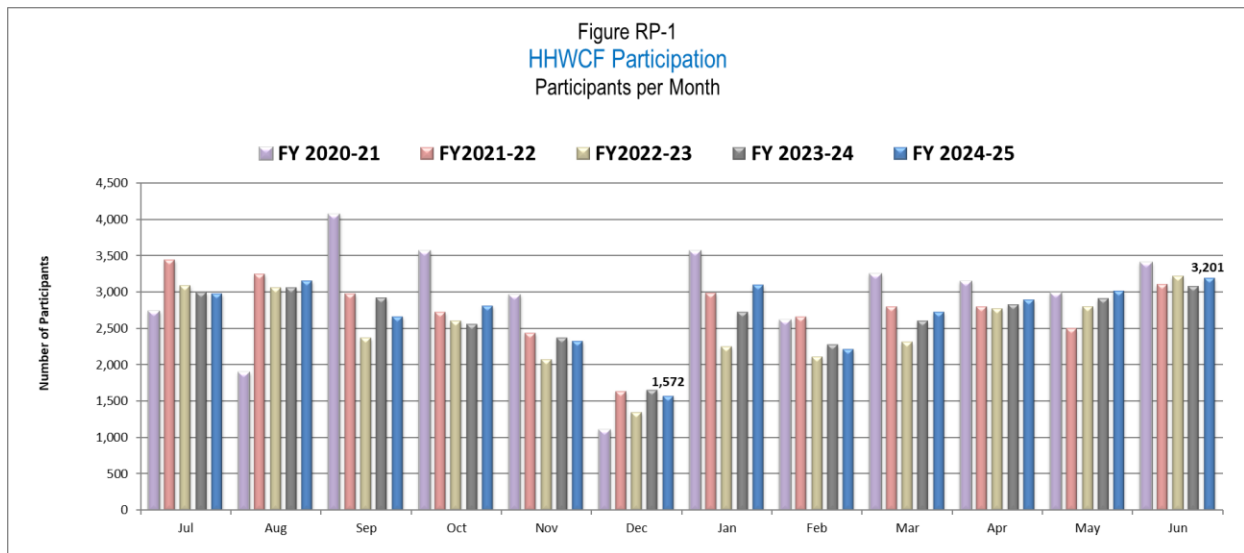


Figure RP-2 presents the average residential participation for each day of operation, Monday through Saturday. Participation throughout the week continued to resemble previous averages, with most customers dropping off waste at the end of the work week.

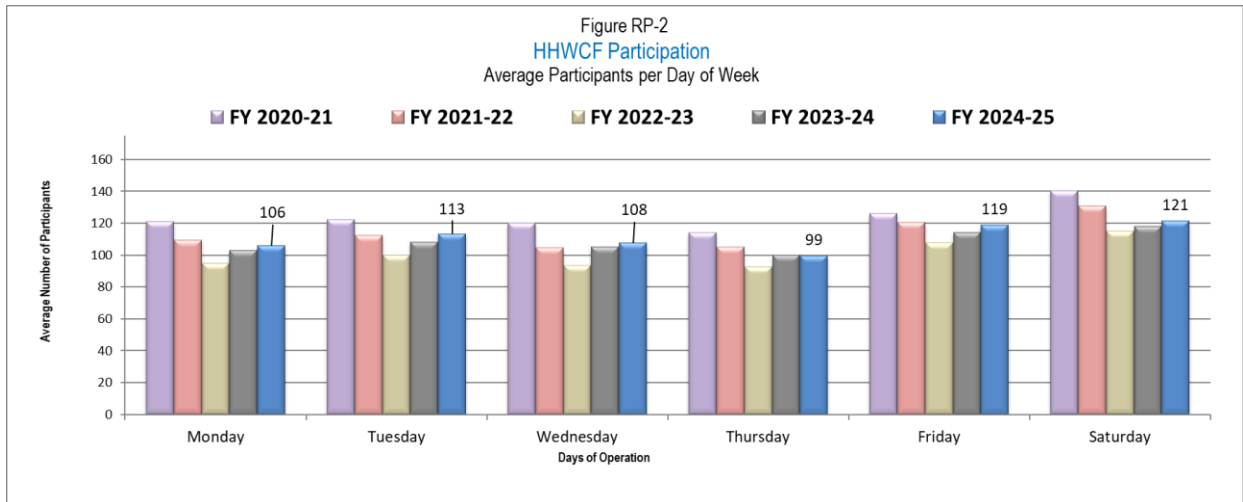


Figure RP-3 presents a comparison of the average number of participants per operating day since the HHW facility opened. This data serves as a tool for planning staffing levels through the different seasons and promoting the facility's services. FY 2024-25 showed a slight increase to 111 participants per day from 109 participants per day in FY 2023-24, but the previous 10-year average was 114 participants per day with a standard deviation of 7.1. Participation continues to trend upward but has not completely rebounded to pre-pandemic levels.

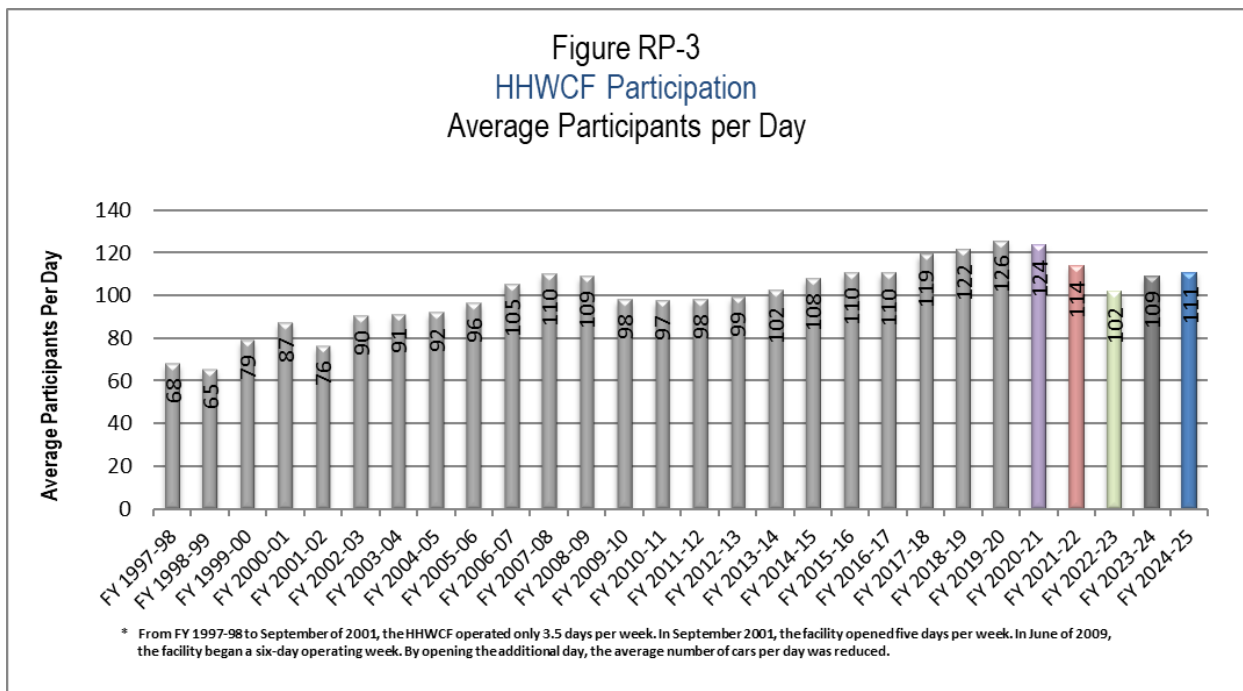


Table RP-1
Residential Participation by Community

Fiscal Year 2024-25

Community	¹ Number of Households	HHW Facility Participation	% of Community Served	
Clayton	4,120	850	20.6%	
Concord	46,299	6,975	15.1%	
Danville	15,944	2,480	15.6%	
Lafayette	9,717	2,245	23.1%	
Martinez/ MVSD	15,092	5,930	39.3%	
Moraga	5,742	955	16.6%	
Orinda	7,153	1,230	17.2%	
Pleasant Hill	14,059	3,250	23.1%	
San Ramon	29,070	1,219	4.2%	8.1%
² San Ramon		1,139	3.9%	
Walnut Creek	33,136	5,522	16.7%	
Unincorporated	19,372	1,774	9.2%	
Subtotal	199,704	32,430	16.2%	
³ Out of Service Area	N/A	⁴ 268	N/A	
Total	199,704	32,698	N/A	

¹ Central San estimate based on January 2025 California Department of Finance data and data provided by MVSD and the City of San Ramon.

² Central San does not sponsor the City of San Ramon's Door-to-Door (DTD) Collection program. Nevertheless, the number of participants served by the program should be included with the number of participants who used the HHW Facility to obtain an overall HHW participation rate. The DTD program includes e-waste pickups.

³ Hazardous wastes from outside of the service area were accepted and processed for one of two reasons: 1) employees from Central San and MVSD who live outside of the service area are also eligible for HHW program participation, or 2) household hazardous waste generated outside the service area that is deemed unsafe for further transport is accepted and processed as a safe and responsible business practice.

⁴ The number of participants outside the service area was not included in the percentage of participants.

Table RP-2
**Percentage of Households in Service Area
and Participation by Community**

Fiscal Year 2024-25

Community	¹ Number of Households	% of Households of Service Area	HHW Facility Participation	% of Total Served
Clayton	4,120	2.1%	850	2.6%
Concord	46,299	23.2%	6,975	21.5%
Danville	15,944	8.0%	2,480	7.6%
Lafayette	9,717	4.9%	2,245	6.9%
Martinez/ MVSD	15,092	7.6%	5,930	18.3%
Moraga	5,742	2.9%	955	2.9%
Orinda	7,153	3.6%	1,230	3.8%
Pleasant Hill	14,059	7.0%	3,250	10.0%
San Ramon	29,070	14.6%	1,219	3.8%
Walnut Creek	33,136	16.6%	5,522	17.0%
Unincorporated ²	19,372	9.7%	1,774	5.6%
Subtotal	199,704	100%	32,430	100.0%
³ Out of Service Area	N/A	N/A	268	N/A
Total	199,704	N/A	32,698	N/A

¹ Central San estimate based on January 2025 California Department of Finance data and data provided by MVSD and the City of San Ramon.

² Hazardous wastes from outside of the service area were accepted and processed for one of two reasons: 1) Employees from Central San and MVSD who live outside of the service area are also eligible for HHW program participation, or 2) Household hazardous waste generated outside the service area that is deemed unsafe for further transport is accepted and processed as a safe and responsible business practice.

³ The number of participants outside of the service area was not included in the percentage of participants.

SAN RAMON DOOR-TO-DOOR COLLECTION PROGRAM

Since 2011, when the City of San Ramon elected to sponsor their own Door-to-Door (DTD) HHW collection program, we have tracked its usage with the HHW facility to show overall participation and proper waste management within the Central San service area. Table SR-1 on the next page describes the participation, waste volumes, and costs that San Ramon reported, compared to the HHW facility's usage figures for San Ramon. San Ramon reported that their DTD program served 1,139 participants and collected 44,791 pounds of waste (not including electronic waste) at a cost of \$225,392.00 in FY 2024-25.

San Ramon's 63% increase in DTD participation differs from the preceding decreases in the past two years. The combined participation in Central San's facility and DTD programs increased by 1.6% overall. See Figure RP-3 (Page 7) and Table SR-1 (Page 11).

Table SR-1
**San Ramon's HHW Facility Participation with
 San Ramon's Door-to-Door Program**

HHW Collection Method	FY 2023-24	FY 2024-25
Central San HHW Facility	1,175	1,219
City of San Ramon Door-to-Door Program	699	1,139
Total participants	1874	2,358
Percent difference in participation from previous period	25.8% More	

Pounds of Waste Collected from San Ramon	FY 2023-24	FY 2024-25
Central San HHW Facility	69,429	69,625
City of San Ramon Door-to-Door Program	20,299	44,791
Total pounds	89,728	
Percent difference in pounds of waste collected from previous period	27.5% More	

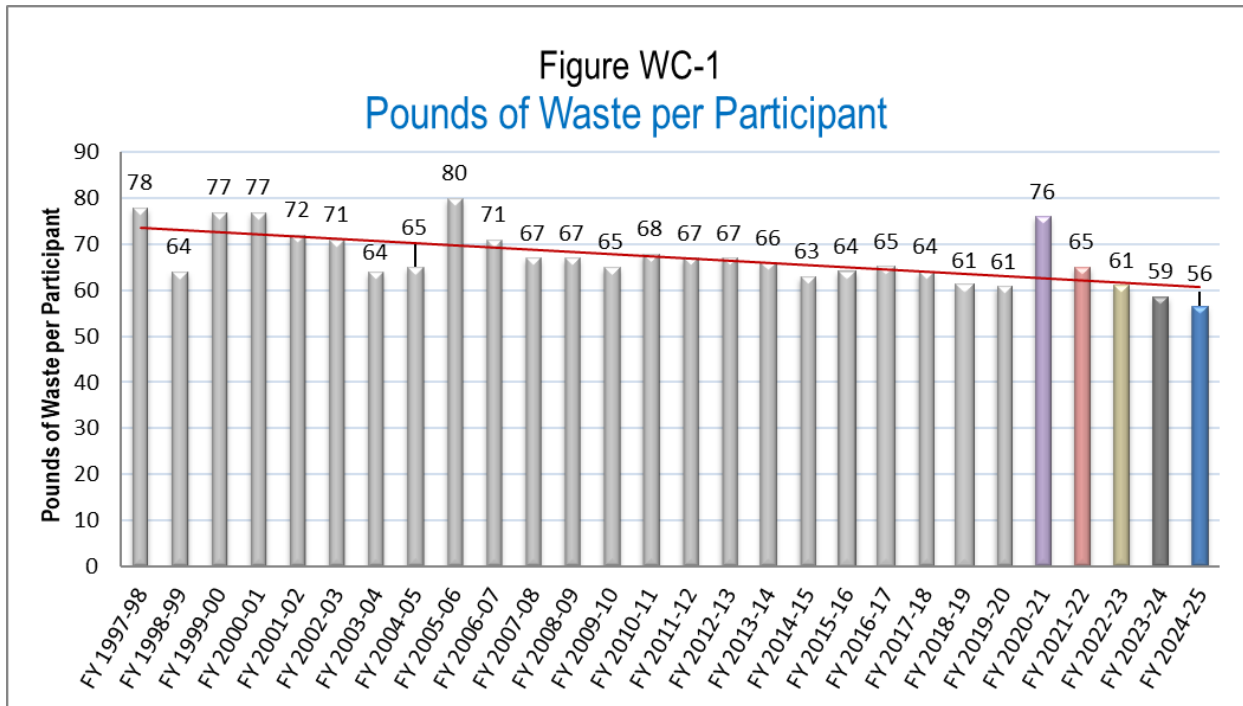
Cost of HHW Collection Method	FY 2023-24	FY 2024-25
Central San HHW Facility *	\$94,486	\$110,074
City of San Ramon's portion of HHW Facility cost	\$27,103	\$27,541
City of San Ramon Door-to-Door Program	\$154,416	\$225,392
Total Cost	\$276,005	\$363,007
HHW Facility Pounds per participant	59	56
HHW Facility Cost per Household Annually	\$16.68	\$18.40
HHW Facility Cost per participant	\$103	\$112
HHW Facility Cost per pound of waste collected	\$1.77	\$1.98
DTD Pounds per participant	29	39
DTD Cost per Household Annually (estimated)	\$5.34	\$7.75
DTD Cost per participant	\$221	\$198
DTD Cost per pound of waste collected	\$7.61	\$5.03

* Cost is determined by multiplying the Total SR customers serviced at the HHW facility by the cost/participant, then subtracting the amount the City of San Ramon paid for the DSRSD households.

WASTE VOLUMES

In FY 2024-25, the HHW program collected 1,859,478 pounds of waste from residents and small businesses. Of that total, 1,592,739 pounds of hazardous waste were recycled or disposed of, while 266,739 pounds of reusable products were given to the public in FY 2024-25. Compared to FY 2023-24, the use of reusable products increased by about 1.6 percent, while the total waste volumes collected decreased by two percent. On average, each participant delivered 56 pounds of waste this year. FY 2024-25 was 10 percent lower than the running 10-year average of 63.2 pounds per participant (including the anomaly of fiscal year 2020-21).

As shown in Figure WC-1, the amount of waste per participant continues to decrease, following the trend observed prior to the pandemic. It is primarily assumed that because most customers are repeat customers, they are simply generating less waste or using the HHW facility more often.



On average, each participant processed by the HHW program during FY 2024-25 delivered 56 pounds of waste for disposal or reuse. This includes 32,698 residents, 176 small business appointments, and 56 retail partner drop-offs during the fiscal year. This represents a four percent decrease from the previous fiscal year and 1.4 standard deviations from the 10-year average.⁴

⁴ A 10-Year mean and Standard Deviation were calculated to be 63.2 and 5.03 pounds, respectively.

The waste was either reused or transported from the HHW collection facility for recycling, fuel blending, incineration, treatment, or disposal in a landfill. Data specific to waste management activities are presented on pages 14, 15, and 16.

The California Department of Resources Recycling and Recovery (CalRecycle) requires a Form 303 report each fiscal year (July through June) summarizing the quantity and types of hazardous waste processed, as well as a breakdown of the waste management method for each type of hazardous waste collected. This report is included as Appendix I.

Figure WC-2 presents the quantity of waste transported off-site each month for disposal. FY 2024-25 decreased 2 percent compared to FY 2023-24. Comparison to FY 2019-20 and FY 2020-21 yields inconclusive inferences as the Reuse Room was shut down for most of this period, leading to increased waste disposal for the facility.

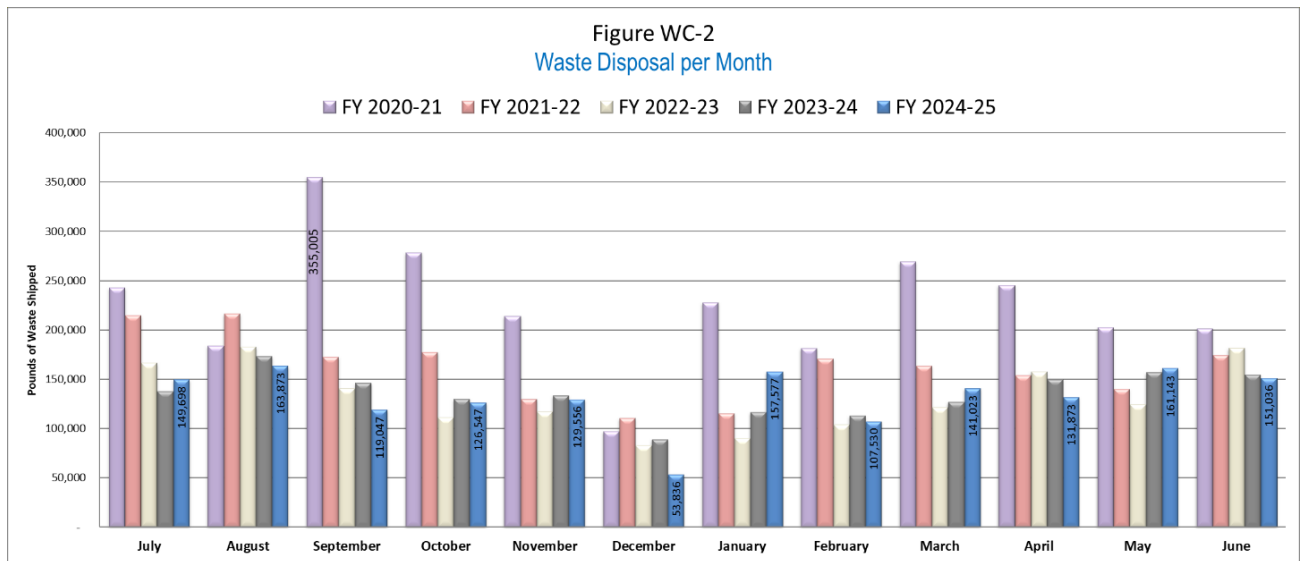


Figure WC-3 presents a breakdown of hazardous waste processed by the general type of waste. The transportation classifications on the shipping documents were used as the primary means for segregation into waste types, except for “Automotive Products,” which was used to represent the facility’s motor oil, oil filter, antifreeze, and lead acid battery waste streams. Compared to the previous fiscal year, there were no significant changes to the proportional weight for any specific category. There was a negligible one percent decrease in the “Other” waste stream, which includes propane tanks, fire extinguishers, and friable asbestos.

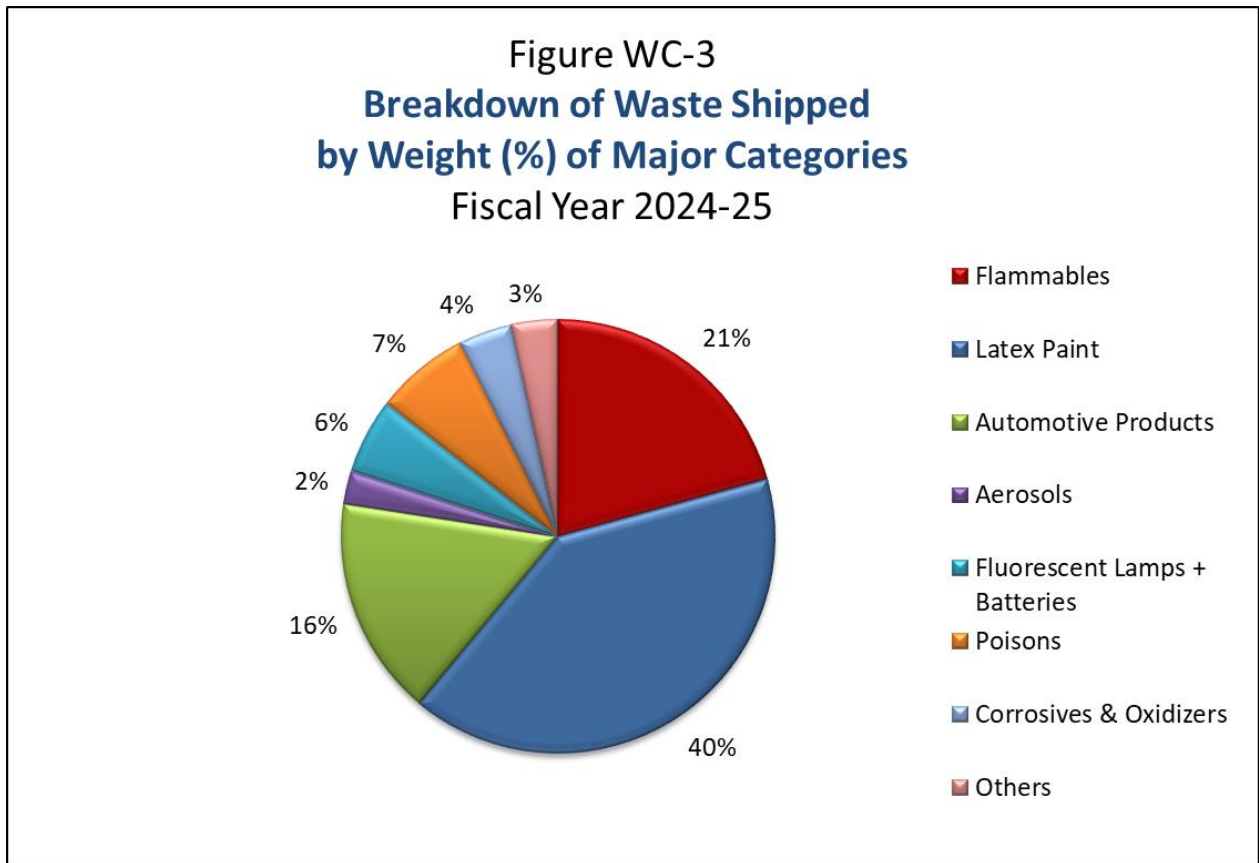


Figure WC-4 presents the distribution of hazardous wastes processed by its management method. Similar to Figure WC-3, there was no significant change to the ratio of treatment methods from the previous fiscal year. Almost 88 percent of the hazardous waste collected was recycled, used as fuel, or offered for reuse.



Table WC-1
Estimated Amount of Waste Collected by Community

Fiscal Year 2024-25

Community	Number of Participants	% of Total Participants (rounded)	Estimated Amount of Waste Collected by Community (pounds)
Clayton	850	2.6%	47,997
Concord	7,043	21.4%	397,701
Danville	2,484	7.5%	140,266
Lafayette	2,254	6.8%	127,278
Martinez / Mt. View	5,994	18.2%	338,467
Moraga	958	2.9%	54,096
Orinda	1,244	3.8%	70,246
Pleasant Hill	3,260	9.9%	184,084
San Ramon	1,233	3.7%	69,625
Walnut Creek	5,556	16.9%	313,734
Unincorporated	1,786	5.4%	100,851
Subtotal	32,662	99.2%	1,844,345
Out of Service Area	268	0.8%	15,133
Total	32,930 ¹	100.0%	1,859,478 ²

¹ The total number of participants includes 32,698 residential participants from the permanent facility, 56 retail partnership drop-offs, and 176 business appointments.

² The total weight collected includes disposed of and reused from the permanent facility (residents, businesses, and retail).

POLLUTION PREVENTION EFFORTS

Central San’s Pollution Prevention (P2) program has evolved over the years to become an essential component of our mission, which specifically includes P2 and reflects the growing importance of P2 for regulatory compliance. Central San is required to monitor and prevent certain pollutants from entering the influent wastewater. The HHW program helps prevent waste from entering the sewer system and tracks the amount diverted from it.

Mercury Collection Program

The HHW program facilitates Central San’s promotion of proper mercury disposal by accepting all types of mercury, including elemental mercury, mercury-containing devices (e.g., fluorescent bulbs, batteries, mercury switches, and mercury thermometers), and mercury-containing compounds (such as paints and pesticides containing mercury).

Since the inception of the mercury thermometer exchange program in 1999, over 7,700 mercury thermometers have been collected and replaced with non-mercury types. Table PP-1 describes the types of mercury-containing wastes tracked by HHW staff. This system closely estimates the quantities of mercury contained in fluorescent lamps, thermometers, thermostats, switches, button-cell batteries, and elemental mercury. In FY 2024-25, the HHW program collected nearly 30 pounds of elemental mercury contained in these types of wastes.

Table PP-1
FY 2024-25 Mercury Collection Summary

Mercury-Containing Devices	Number of Items	Units	Estimated Quantity of Mercury	Total Pounds Hg
Thermostats (3 Grams/unit)	42	Ea.	126 Grams	0.28
Thermometers (1 Grams/unit)	419	Ea.	419 Grams	0.92
Elemental Hg (Lbs.)	N/A	N/A	N/A	26.00
Switches	2	Lbs.		0.75
Mercury Batteries	175	Lbs.	546,875 Milligrams	1.20
Fluorescent Lamps	229,432	Feet	476,071 Milligrams	1.05
Total mercury (Hg) in Pounds				30.20
Paints, pesticides, and other compounds containing mercury	0	Container	-	0

Other Pollutants

Additional pollutants of concern, such as legacy pesticides, are tracked separately to provide a more accurate report of collected compounds. Table PP-2 lists the pollutants of concern that are tracked along with the quantities collected in FY 2024-25.

Table PP-2
FY 2024-25 Pollutants of Concern Summary

Compound	Total Pounds
Tributyltin	0
Diazinon	3,302
Chlorpyrifos	2,563
Carbaryl	2,587
Copper	3,138
Pentachlorophenol / 2,4,5-T / Trichlorophenol	126
Lindane	86
Chlordane	99
DDT (DDE)	54
Dieldrin	10
Lead Compounds	358
Pyrethroids (pesticides)	15,281
Ammonia	2,724
Fats, Oils, and Greases (FOG)	11,608
Polychlorinated biphenyls (PCBs) / Light ballasts	701
Total	42,864

Pharmaceutical Collection Program

Another way the HHW Program contributes to Central San's P2 program is by collecting unwanted or expired pharmaceuticals from residents. Pharmaceuticals can threaten our bays, rivers, and creeks, as some of the compounds they contain cannot be entirely treated or removed by wastewater treatment plants. Pharmaceuticals can enter the sewer system through excretion from the body or customers dumping them down the drain. Since we cannot prevent unmetabolized medications from entering the treatment plant, we established a collection and disposal program for unwanted pharmaceuticals. Central San's pharmaceutical program began in 2009, and since then, nearly 170,000 pounds of unwanted or expired medications have been collected and properly disposed of by incineration. In FY 2024-25, approximately 1,127 pounds were collected at a cost of \$3,875 from the one remaining

collection site, Walnut Creek. Due to Med-Project, the state-required, manufacturer-sponsored pharmaceutical collection program, 12 of our 13 collection locations have converted to Med-Project, with the last one in the process of moving over. There are more than 40 Med-Project collection sites, including the one remaining Central San site in the HHW service area.

* The following sites were converted to Med-Project as of the listed dates:

San Ramon - November 2019	Lafayette – January 2023
Clayton - June 2021	Danville - March 2023
Concord - June 2021	Martinez - July 2023
Orinda – July 2021	Alamo – July 2024
Pleasant Hill - December 2021	CCC Hospital – July 2024
Moraga - April 2022	Sheriff FOB – July 2024

Table PP-3 describes the amount of pharmaceuticals collected by each site and the cost of collection and disposal during the year.

Table PP-3
FY 2024-25 Pharmaceutical Collection Summary

Collection Sites	Total Bins (18-Gallon)	Total Pounds	Average Lbs./Bin	Total Cost	*Average Cost/Lb.
Walnut Creek	31	1,127	36.4	\$3,875	\$3.43

WASTES DIVERTED FROM SEWER AND LANDFILL DISPOSAL

The California Integrated Waste Management Act of 1989 (AB 939) requires the diversion of HHW from the municipal solid waste stream. AB 939 establishes a waste management hierarchy to minimize the amount of HHW sent to landfills through reduction, reuse, recycling, treatment, or incineration (fuel blending or destructive incineration). It diverts a minimum of 50 percent of solid waste from being landfilled. The emphasis is on reduction, reuse, and recycling whenever possible.

Although Central San's HHW program is not required to comply with AB 939, Central San's waste management strategy mirrors AB 939 by prioritizing reduction, reuse, recycling, and fuel blending, in that order, to the greatest extent feasible. All of these management methods divert wastes from being landfilled. The HHW program's progress toward sewer and landfill diversion for FY 2024-25 is outlined below.

Reused

The reuse room was open each operating day in FY 2024-25. During this time, 14.3 percent (266,739 lbs.) of the waste received was diverted to the reuse program and returned to the public because it was still a viable/usable product. As a result, the reuse program saved over \$114,000 in disposal costs.

Recycled

The waste recycled at off-site facilities includes latex paint, used motor oil/filters, antifreeze, car batteries, propane cylinders, fluorescent lamps, LED lamps, lead (scrap metal), mercury, household batteries, printer cartridges, Freon, mercury thermostats, fire extinguishers, and even home-generated cooking oil. Many of these recyclable waste streams are free, or we receive rebates for recycling.

Fuel Blended (Waste Derived Fuel)

In FY 2024-25, 327,601 pounds of oil-based paint and fuels (including gasoline, paint thinners, etc.) were blended with other flammable hazardous wastes and used as a fuel source to make Portland cement. While fuel blending is lower in the waste management hierarchy than recycling, it is still a beneficial use that avoids the use of fossil fuels and prevents destructive incineration, treatment, or Class I landfill disposal. Table WD-1 shows the waste streams and quantities of waste diverted from landfills.

Table WD-1
Quantity of Landfill Diverted Waste

Material Type	Recycled Quantity (Lbs.)
Motor Oil and Oil Filters	176,600
Antifreeze	37,941
Car Batteries	46,467
Fluorescent and LED lights	31,233
Compressed Gas Cylinders (Propane and Fire Extinguishers)	25,373
Scrap Metal (Lead, Brass, and Copper)	308
Printer Cartridges	1,119
Mercury and Mercury Products	109
Household batteries	57,885
Latex Paint	642,263
Cooking Oil	19,904
Smoke Detectors	81
Total recycled waste	1,039,283
Reused HHW	266,739
Total recycled and reused	1,306,022
Percent of HHW reused or recycled	70.2%
Fuel Blended	
Oil-Based Paint	199,051
Other Flammable Liquids	128,550
Total fuel blended waste	327,601
Percent of waste fuel blended to total collected	17.6%
Total landfill-diverted waste	1,633,623
Percent of waste diverted from landfill	87.9%
Total waste collected, including reused, recycled, and disposed of	1,859,478

SMALL BUSINESS PROGRAM

An essential component of the HHW program is the collection of hazardous waste from small businesses. These businesses must meet the regulatory standards as a “Very Small Quantity Generator” (VSQG). This Small Business Program remains a cost-effective and convenient disposal option for small hazardous waste generators. Program statistics are in tables SB-1 and SB-2.

Revenue collected from small businesses is used solely for hazardous waste disposal or recycling and includes an administration fee of \$20 per appointment. Small business participation fluctuates from year to year, as does the revenue collected. See Appendix III for the current Small Business Program disposal rates.

Small Business Program outreach includes ongoing advertising in local chamber of commerce publications, Central San’s *Pipeline* newsletter, MVSD’s *Mt. View Monitor* newsletter, and business trade fairs. Central San’s Environmental Compliance Inspectors and Contra Costa County Hazmat Program Inspectors also have the opportunity to share their expertise while completing their fieldwork and onsite audits of the operations of eligible businesses.

Table SB-1
Small Business Participation by Community

Community	Fiscal Year 2024-25	Previous Year
Clayton	0	0
Concord	68	69
Danville	4	6
Lafayette	9	17
Martinez/ Mt. View	34	33
Moraga	3	9
Orinda	10	6
Pleasant Hill	10	10
San Ramon	13	10
Walnut Creek	18	27
Unincorporated	7	8
Outside of service area	0	0
TOTAL	176	195

Table SB-2
Small Business Appointment Statistics

Fiscal Year	Number of Businesses Served	Number of <u>New</u> Businesses Served	Number of Appointments	Estimated Pounds of Waste Collected	Revenue per Pound of Waste	Revenue Collected
05-06	128	55	252	40,841	\$0.54	\$22,054
06-07	161	94	373	81,777	\$0.45	\$37,008
07-08	191	104	386	59,966	\$0.57	\$34,324
08-09	148	75	416	72,728	\$0.46	\$33,236
09-10	178	82	439	73,045	\$0.43	\$29,290
10-11	206	77	485	72,991	\$0.43	\$31,157
11-12	171	68	378	53,486	\$0.54	\$30,696
12-13	134	53	291	42,838	\$0.58	\$24,707
13-14	129	40	255	35,620	\$0.64	\$22,900
14-15	141	48	287	42,876	\$0.63	\$27,126
15-16	149	67	339	55,370	\$0.61	\$33,884
16-17	158	51	303	44,436	\$0.63	\$28,054
17-18	149	63	353	55,287	\$0.64	\$35,566
18-19	181	62	348	57,898	\$0.68	\$39,126
19-20	130	55	247	38,698	\$0.71	\$27,234
20-21	87	19	201	33,920	\$0.76	\$25,862
21-22	93	22	209	38,914	\$0.76	\$29,733
22-23	74	24	191	34,227	\$0.71	\$24,442
23-24	127	26	195	33,057	\$0.72	\$23,823
24-25	85	30	176	26,958	\$0.81	\$21,836

PUBLIC EDUCATION AND OUTREACH

HHW program participation has increased steadily since the program’s inception. It is publicized in each Central San Pipeline newsletter issue, mailed twice yearly, to more than 156,000 Central San residential and business customers. Additionally, MVSD, the Central Contra Costa Solid Waste Authority, and cities and organizations in the service area have utilized social media and newsletters to provide public education and promotion of the HHW program and its associated Pharmaceutical Disposal Program. With this promotional strategy, approximately 3.2 percent of the total residential participants during FY 2024-25 were first-time customers, and the remaining 96.8 percent were repeat customers.

REVENUE AND EXPENSES

The HHW program expenses for FY 2024-25 were \$3,675,270, representing a 10 percent increase from the previous year. The increase is primarily due to a new waste services contract in November 2024 with Republic Services (ACTenviro), which increased the cost of contract labor, supplies, and waste disposal combined by more than 13%. Also of note were repairs, replacements, and maintenance on aging equipment at the 28-year-old facility. These updates included the replacement of two fire-rated roll-up doors, the replacement of the facility's loading dock leveler, and the replacement of three of the facility's four HVAC heat pumps. The fourth was removed and not replaced. Lastly, what appeared to be an increase in insurance premiums when compared to FY 2023-24 was actually a reporting error last year, as the premium was billed in two parts and the second part was not applied to the final report.

Waste disposal costs have remained high since August 2021, when the US EPA issued a notice explaining a nationwide backlog and warned that the hazardous waste disposal market was under stress and was not expected to recover until the summer of 2022. US EPA extended that warning in May 2022 and again in July 2023, stating that the backlog remains in effect. The backlog has since been reduced enough to return costs to pre-August 2021 levels; however, costs remain unchanged compared to the pre-pandemic era. It appears that the current elevated costs have become the new standard.

For the first 24 years of operation, we reported the cost per participant as the gauge to value our customers' expenses, but it only represents what it would cost if each HHW customer had to pay at the time of service. It is unreasonable to continue to report a cost of \$80-100 per participant that is not charged to our customers and a cost our customers would not likely pay to use the service if required. It will remain in the report for historical purposes only.

For FY 2024-25, the cost per household was \$18.40. This means that \$18.40 of each annual sewer service charge provides residents with unlimited access to the HHWCF and Reuse Room, the Pharmaceutical Collection Program, and the Residential Recycled Water Fill Station. All were open and available seven hours a day, six days per week, ~293 days. This cost per household is slightly more than last year's \$16.60 per household due to the cost increases mentioned previously. Although it is not included in the cost of the HHW program, the Residential Recycled Water Fill Station is conveniently co-located at the HHWCF, and its operation and staff are overseen by HHW staff.

Revenue, Savings, and No Cost Waste Management

Revenue for the HHW Collection Facility included payments from other jurisdictions under service agreements (MVSD, City of Concord, City of Clayton, and City of San Ramon) as well as charges to small businesses under the Small Business Program. Additionally, staff are diligent in seeking low-cost or no-cost management or revenue-generating alternatives while also ensuring safe and proper disposal. Much of the waste collected by the HHWCF has market value or requires manufacturers to manage and pay the cost of their recycling, also known as Extended Producer Responsibility (EPR). Table RE-1 describes the revenue-generating and no-cost waste streams collected in FY 2024-25, as well as the savings or rebates provided to Central San.

Table RE-1

Household Hazardous Waste Collection Facility FY 2024-25 Summary of Estimated Cost Savings/Rebates

Waste Stream	FY 2024-25 Pounds Collected	Savings or Rebates Provided by EPR or Other
PaintCare Latex and Oil-Based Paint Waste	731,246	* \$285,186
Reusable PaintCare Latex and Oil-Based Products (Rebate)	115,504	* \$18,481
Savings from PaintCare Reusable Products Given Away Rather than Disposed	115,504 (Not included in total below.)	* \$45,047
Estimated Savings Related to PaintCare Disposal	846,750	\$348,714
Non-PaintCare Reusable Products	147,140	* \$57,385
Small Business Program Revenue	24,442	\$23,823
Sale of Collected Materials or No-Cost Recycling	88,745	** \$48,179
Estimated Other Savings	260,327	\$129,387
Estimated Total Annual Savings	1,107,077 pounds	\$478,101

* Cost savings related to PaintCare and reusable products (reuse) is based on the total disposal and material costs divided by the number of pounds disposed (\$0.43/lb. for '24-25), multiplied by the number of pounds of PaintCare waste recycled and other reusable products. This is a conservative estimate and does not include labor or other factors.

** Sale of collected materials or no-cost recycling – Savings/rebate equals “Sale of collected materials and small business revenue” minus PaintCare reuse rebate and Small Business Program revenue. Pounds collected is total of car batteries, cooking oil, rechargeable batteries, Li-ion batteries, printer cartridges, lead, mercury thermostats, and freon. The savings shown include the cost to dispose (at \$0.43/lb.) and any rebates provided.

Tables and Figures

Figure RE-1 shows the operating cost per household in the HHW service area broken down by expense category.

Figure RE-2 lists the cost per household for each year the HHW program has been in operation.

Figure RE-3 shows the current and historical operating cost per pound of waste collected.

Figure RE-4 shows the historical cost per participant.

Table RE-2 presents a full summary of revenue and expenses for the HHW Program.

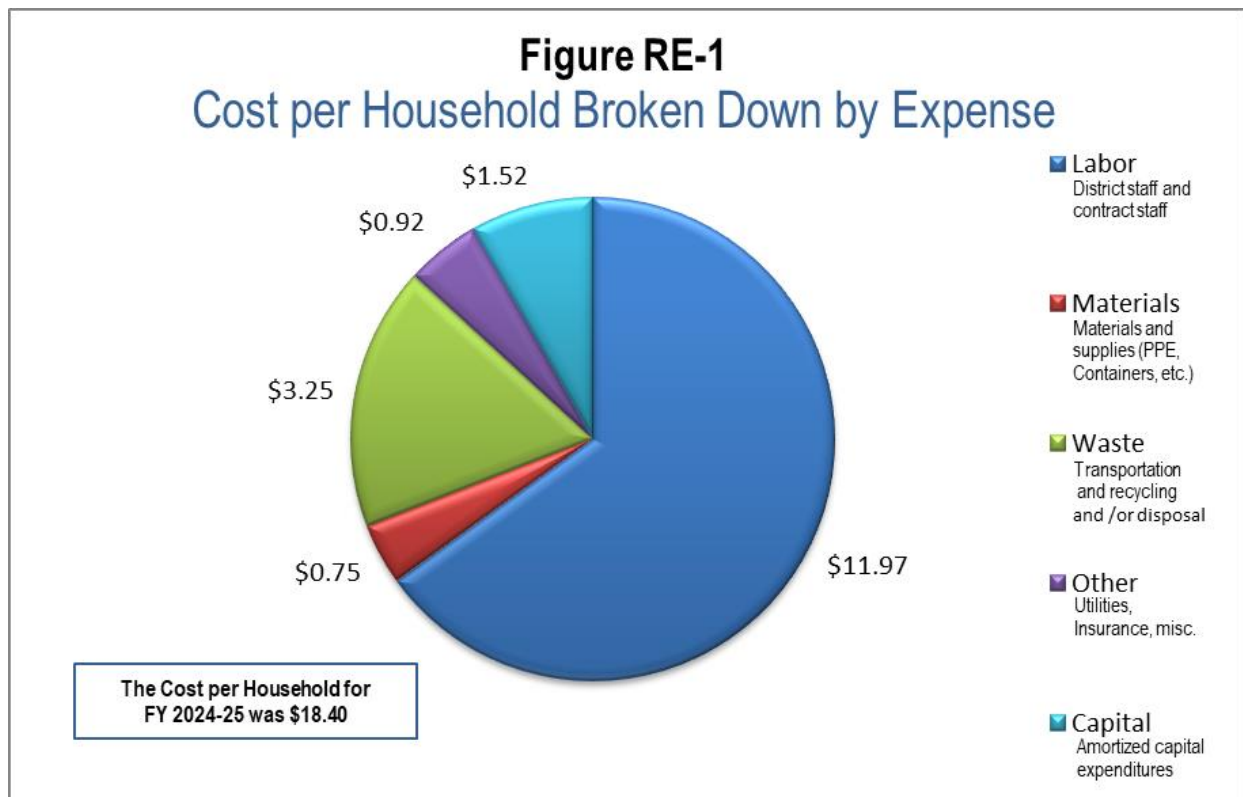


Figure RE-2
HHW Program Annual Cost per Household 1997-Present

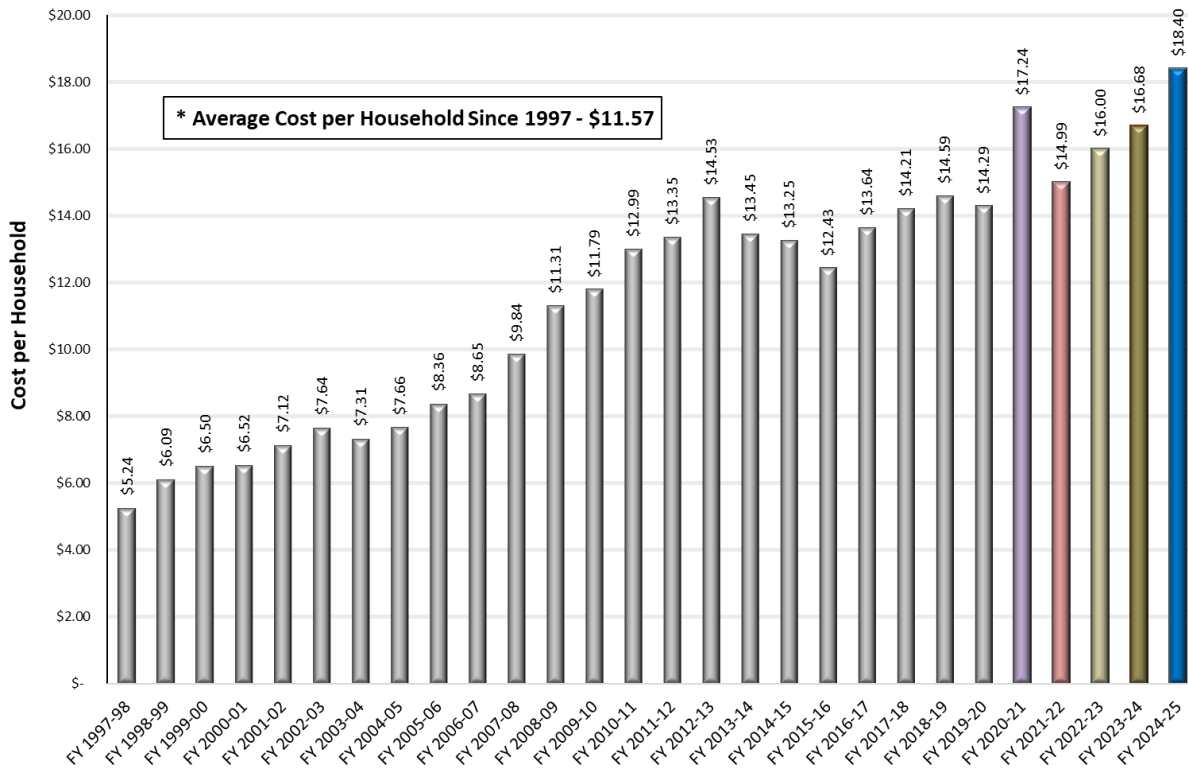


Figure RE-3
Operating Cost per Pound of Waste Collected

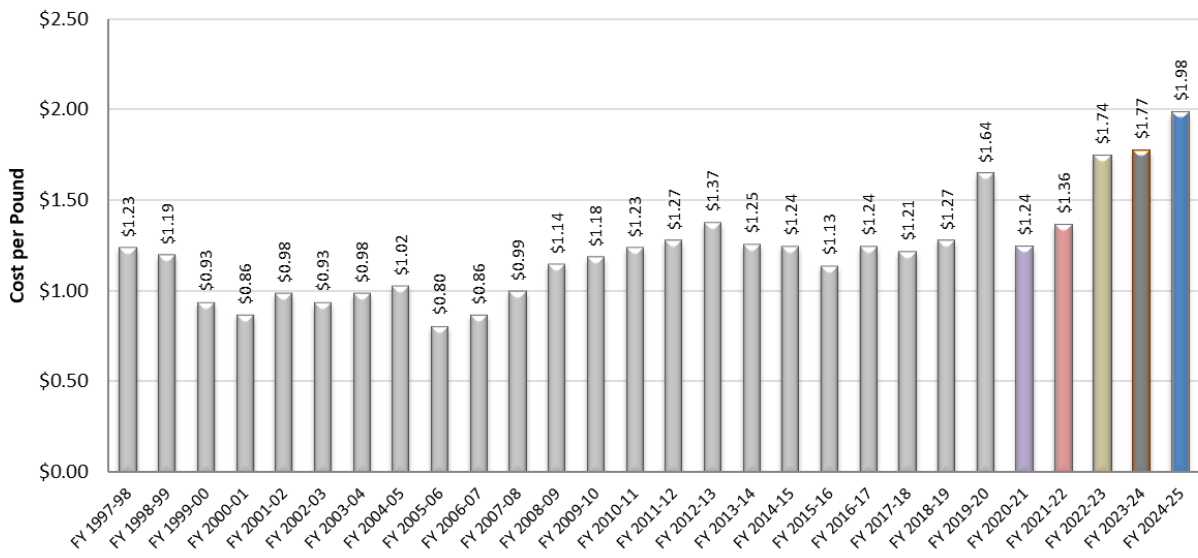


Figure RE-4
Operating Cost per Participant

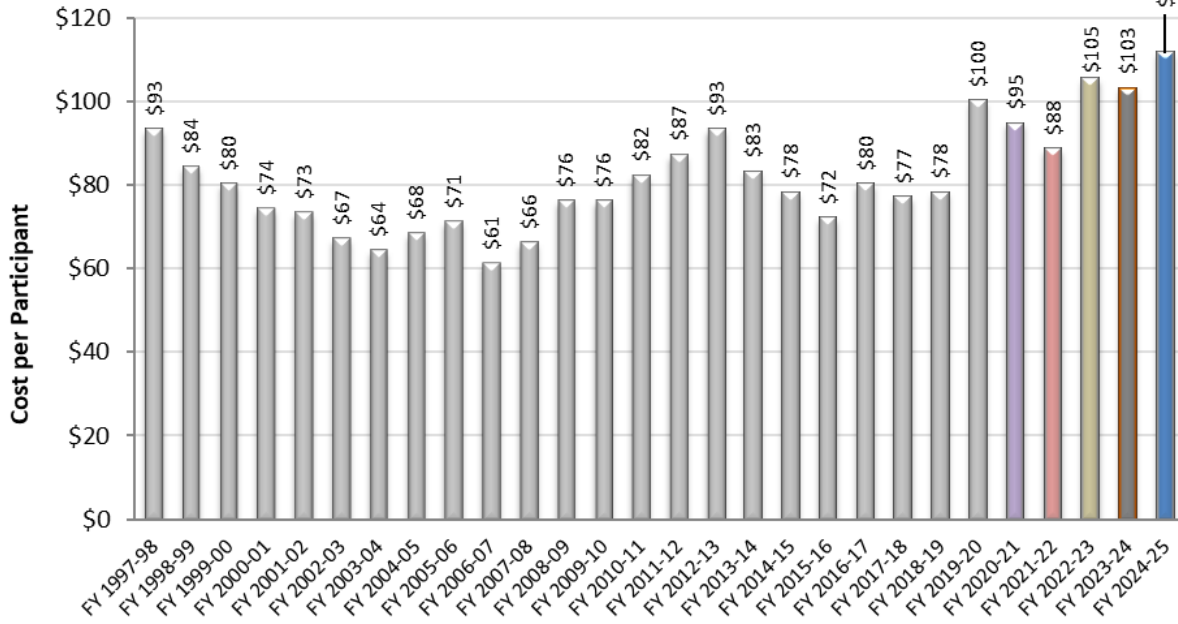


Table RE-2

Household Hazardous Waste Collection Facility
Fiscal Year 2024-25 Summary of Revenue and Expenses

REVENUE	<u>FY 2023-24</u>	<u>FY 2024-25</u>
Central San Sewer Service Charges:	\$ 2,228,850	\$ 2,455,641
Service agreements with other jurisdictions:	<u>FY 2023-24</u>	<u>FY 2024-25</u>
Mt. View Sanitary District	\$ 141,473	\$ 163,886
City of Concord	778,264	872,959
City of Clayton	69,331	77,682
City of San Ramon	<u>27,103</u>	<u>27,541</u>
	\$ 1,016,171	\$ 1,142,068
Sale of collected materials and small business charges:	\$ 83,516	\$ 53,025
Transfer portion of revenue to self-insurance for insurance policy:	<u>\$ 14,194</u>	<u>\$ 24,536</u>
TOTAL REVENUE	<u>\$ 3,342,731</u>	<u>\$ 3,675,270</u>
Expenses	<u>FY 2023-24</u>	<u>FY 2024-25</u>
Salaries, benefits, and overhead (HHW Staff)	\$ 2,027,065	\$ 2,161,171
Environmental liability premiums	47,205	80,738
Utilities	18,329	20,907
Repairs and maintenance	5,851	56,594
Transportation and disposal	607,175	648,813
Professional, technical, and legal services	192,453	228,527
Materials and supplies	126,863	150,219
Other expenses	<u>19,750</u>	<u>25,355</u>
TOTAL OPERATING EXPENSES	<u>\$ 3,044,690</u>	<u>\$ 3,372,324</u>
Amortization of Capital Expenditures	<u>298,041</u>	<u>302,947</u>
TOTAL EXPENSES	<u>\$ 3,342,731</u>	<u>\$ 3,675,270</u>

Amortization of Capital Expenditures

Amortization of capital expenditures is derived from the capital costs of building the collection facility and all capital improvements, amortized over a 30-year period. Capital expenses increased this fiscal year by 1.65% due to the replacement of the facility's heat pumps. Table RE-3 shows the amortization schedule of all capital expenditures since the completion of the HHW facility in 1997.

Table RE-3

HHW Facility Capital Expenditure Amortization Schedule

Fiscal Year Ending	Original Construction	Improvement Project - District Projects (DP)					Heat Pumps Replacement	Total
		DP8180	DP8197 & DP8204	DP8209 & DP7229	DP8216	DP7256		
	\$ 1,900,000	\$ 427,368	\$ 32,492	\$ 319,393	\$ 1,420,093	\$ 3,081	\$ 67,518	\$ 4,169,945
1998	\$ 138,035							138,035
1999	\$ 138,035							138,035
2000	\$ 138,035							138,035
2001	\$ 138,035							138,035
2002	\$ 138,035							138,035
2003	\$ 138,035							138,035
2004	\$ 138,035	31,048						169,083
2005	\$ 138,035	31,048	2,361					171,444
2006	\$ 138,035	31,048	2,361					171,444
2007	\$ 138,035	31,048	2,361	23,204				194,648
2008	\$ 138,035	31,048	2,361	23,204				194,648
2009	\$ 138,035	31,048	2,361	23,204				194,648
2010	\$ 138,035	31,048	2,361	23,204				194,648
2011	\$ 138,035	31,048	2,361	23,204	103,170			297,818
2012	\$ 138,035	31,048	2,361	23,204	103,170			297,818
2013	\$ 138,035	31,048	2,361	23,204	103,170	224		298,042
2014	\$ 138,035	31,048	2,361	23,204	103,170	224		298,041
2015	\$ 138,035	31,048	2,361	23,204	103,170	224		298,042
2016	\$ 138,035	31,048	2,361	23,204	103,170	224		298,042
2017	\$ 138,035	31,048	2,361	23,204	103,170	224		298,042
2018	\$ 138,035	31,048	2,361	23,204	103,170	224		298,042
2019	\$ 138,035	31,048	2,361	23,204	103,170	224		298,042
2020	\$ 138,035	31,048	2,361	23,204	103,170	224		298,042
2021	\$ 138,035	31,048	2,361	23,204	103,170	224		298,042
2022	\$ 138,035	31,048	2,361	23,204	103,170	224		298,042
2023	\$ 138,035	31,048	2,361	23,204	103,170	224		298,042
2024	\$ 138,035	31,048	2,361	23,204	103,170	224		298,042
2025	\$ 138,035	31,048	2,361	23,204	103,170	224	4,905	302,947
2026	\$ 138,035	31,048	2,361	23,204	103,170	224	4,905	302,947
2027	\$ 138,035	31,048	2,361	23,204	103,170	224	4,905	302,947
2028		31,048	2,361	23,204	103,170	224	4,905	164,912
2029		31,048	2,361	23,204	103,170	224	4,905	164,912
2030		31,048	2,361	23,204	103,170	224	4,905	164,912
2031		31,048	2,361	23,204	103,170	224	4,905	164,912
2032		31,048	2,361	23,204	103,170	224	4,905	164,912
2033		31,048	2,361	23,204	103,170	224	4,905	164,912
2034			2,361	23,204	103,170	224	4,905	133,864
2035				23,204	103,170	224	4,905	131,503
2036				23,204	103,170	224	4,905	131,503
2037					103,170	224	4,905	108,299
2038					103,170	224	4,905	108,299
2039					103,170	224	4,905	108,299
2040					103,170	224	4,905	108,299
2041						224	4,905	5,129
2042						224	4,905	5,129
2043							4,905	4,905
2044							4,905	4,905
2045							4,905	4,905
2046							4,905	4,905
2047							4,905	4,905
2048							4,905	4,905
2049							4,905	4,905
2050							4,905	4,905
2051							4,905	4,905
2052							4,905	4,905
2053							4,905	4,905
2054							4,905	4,905
	\$ 4,141,050	\$ 931,449	\$ 70,829	\$ 696,120	\$ 3,095,093	\$ 6,715	\$ 147,155	\$ 9,088,411

Rate = 6 percent amortized over 30 years.

Appendix I

F303 Form





Form CalRecycle 303 Household Hazardous Waste Collection Information For 2024-2025

Name of Public Agency Reporting: Central Contra Costa Sanitary District
HHW Program Manager: David Wyatt ,HHW Program Supervisor
Address: Regulatory and Environmental Compliance Division 5019 Imhoff Place Martinez, CA 94553
Phone Number: (925) 335-7714
Fax Number: (925) 370-8647
Email: dwyatt@centralsan.org
Contractor's Name: ACTenviro
Participating Households: 32,930 **Method:** Number of Vehicles
Participating Households includes non-residential (CESQG,schools,nonprofits,etc.): Yes
Service Area Households: 199,704 Different than Finance E-5 report

Participants Represented by Reporting Jurisdiction/Agency (i.e., individual city(ies), county(ies), other agency(ies)):

Clayton	Concord	Contra Costa-Unincorporated	Danville	Lafayette
Martinez	Moraga	Orinda	Pleasant Hill	San Ramon
Walnut Creek				

Permanent Facilities within Program Service Area:

Facility Name	EPAID	Site Contact	Phone	Facility Address	County
Central Contra Costa Sanitary District	CAH111000541	David Wyatt	(925) 335-7714	4797 Imhoff Place Martinez, CA 94553	Contra Costa

Program Types:

Program Type	EPAID	Program Type	EPAID	Program Type	EPAID	Program Type	EPAID
Permanent Facility	CAH111000541	Retail - Ace Hardware Walnut Creek - Ygnacio		Retail - Ace Hardware Walnut Creek - Mt. Diablo		Retail - Ace Hardware Alamo	
Retail - Ace Hardware Clayton		Retail - Ace Hardware Martinez		Retail - Ace Hardware Blackhawk		Pharmaceutical Collection - Walnut Creek PD	



DEPARTMENT OF RESOURCES RECYCLING AND RECOVERY

1001 I STREET, SACRAMENTO, CALIFORNIA 95814 • www.CalRecycle.ca.gov • (916) 322-4027
 P.O. BOX 4025, SACRAMENTO, CALIFORNIA 95812

Collection (pounds)	Material Type	Permanent Facility	Temporary (periodic) Facility	Mobile Facility	Recycle-only Facility	Door to Door (residential) Program	Curbside Program	Load Check	Other
Flammable and Poison	Flammable solids / liquids	90,736							
	Bulked flammable liquids	40,050							
	Oil-based paints	91,053							
	Paint Related Material (PRM)	123,450							
	Poisons	112,141							
	Reactive and explosive	59							
	Compressed gas cylinders	22,603							
	1 lb propane canister	2,770							
	Flammable and Poison subtotal	482,862							
PCB-containing	PCB-containing paint								
	Other PCB waste (includes ballasts)	1,400							
	PCB-containing subtotal	1,400							
Reclaimable	Antifreeze	37,941							
	Auto type batteries (motor vehicles)	46,467							
	Latex paint	727,821							
	Motor oil/oil products	171,400							
	Used oil filters (recyclables only)	5,200							
	Reclaimable subtotal	988,829							
Acid	Inorganic and organic acid	19,295							
Base	Inorganic and organic base	35,009							
Oxidizer	Neutral oxidizers, Organic peroxides, Oxidizing acid/base	9,177							
Asbestos	Asbestos	1,800							
Universal Waste (UW)*	Mercury containing automatic switches / thermometers / and novelties	68							
	Mercury containing thermostats	15							
	Mercury containing waste (other)	26							
	Lamps	26,490							4,743
	Photovoltaic Modules								
	Other batteries	39,018							10,666
	Aerosol cans	39,600							
Rechargeable batteries	8,201								



DEPARTMENT OF RESOURCES RECYCLING AND RECOVERY

1001 I STREET, SACRAMENTO, CALIFORNIA 95814 • www.CalRecycle.ca.gov • (916) 322-4027
 P.O. BOX 4025, SACRAMENTO, CALIFORNIA 95812

Collection (pounds)	Material Type	Permanent Facility	Temporary (periodic) Facility	Mobile Facility	Recycle-only Facility	Door to Door (residential) Program	Curbside Program	Load Check	Other
Electronic Devices (UW)	Covered Electronic Devices								
	Other Electronic Devices								
	Electronic Devices (UW) subtotal								
Universal Waste (UW)* + Electronic Devices (UW) subtotal		113,418							15,409
Other	Home-generated sharps waste	24							
	Home-generated pharmaceutical waste								1,127
	Treated wood								
	Cooking Oil	19,904							
	Freon	105							
	Non-PCB Ballasts	3,734							
	Other								
	Printer Cartridges	1,119							
	Scrap Lead	308							
	Smoke Detectors	81							
	Vape Devices	148							
	Reuse Total	165,729							
Other subtotal		191,152							1,127
Grand Total		1,842,942							16,536



DEPARTMENT OF RESOURCES RECYCLING AND RECOVERY

1001 I STREET, SACRAMENTO, CALIFORNIA 95814 • www.CalRecycle.ca.gov • (916) 322-4027
 P.O. BOX 4025, SACRAMENTO, CALIFORNIA 95812

Disposition (pounds)	Material Type	Destructive Incineration	Fuel Incineration	Landfill	Neutralization / Treatment	Recycled	Reused	Stabilization	Steward
Flammable and Poison	Flammable solids / liquids	2,236	88,500						
	Bulked flammable liquids		40,050						
	Oil-based paints						15,452		75,601
	Paint Related Material (PRM)		123,450						
	Poisons	112,141							
	Reactive and explosive	59							
	Compressed gas cylinders					22,603			
	1 lb propane canister					2,770			
Flammable and Poison subtotal		114,436	252,000			25,373	15,452		75,601
PCB-containing	PCB-containing paint								
	Other PCB waste (includes ballasts)			1,400					
	PCB-containing subtotal				1,400				
Reclaimable	Antifreeze					37,941			
	Auto type batteries (motor vehicles)					46,467			
	Latex paint						85,558		642,263
	Motor oil/oil products					171,400			
	Used oil filters (recyclables only)					5,200			
	Reclaimable subtotal						261,008	85,558	
Acid	Inorganic and organic acid				19,295				
Base	Inorganic and organic base				35,009				
Oxidizer	Neutral oxidizers, Organic peroxides, Oxidizing acid/base				9,177				
Asbestos	Asbestos			1,800					
Universal Waste (UW)*	Mercury containing automatic switches / thermometers / and novelties					68			
	Mercury containing thermostats								15
	Mercury containing waste (other)					26			
	Lamps					31,233			
	Photovoltaic Modules								
	Other batteries					49,684			
	Aerosol cans	25,740	13,860						
	Rechargeable batteries					8,201			



DEPARTMENT OF RESOURCES RECYCLING AND RECOVERY

1001 I STREET, SACRAMENTO, CALIFORNIA 95814 • www.CalRecycle.ca.gov • (916) 322-4027
 P.O. BOX 4025, SACRAMENTO, CALIFORNIA 95812

Disposition (pounds)	Material Type	Destructive Incineration	Fuel Incineration	Landfill	Neutralization / Treatment	Recycled	Reused	Stabilization	Steward
Electronic Devices (UW)	Covered Electronic Devices								
	Other Electronic Devices								
	Electronic Devices (UW) subtotal								
Universal Waste (UW)* + Electronic Devices (UW) subtotal		25,740	13,860			89,212			15
Other	Home-generated sharps waste			24					
	Home-generated pharmaceutical waste	1,127							
	Treated wood								
	Cooking Oil					19,904			
	Freon					105			
	Non-PCB Ballasts			3,734					
	Other								
	Printer Cartridges					1,119			
	Scrap Lead					308			
	Smoke Detectors					81			
	Vape Devices	148							
	Reuse Total							165,729	
Other subtotal		1,275		3,758		21,517	165,729		
Grand Total		141,451	265,860	6,958	63,481	397,110	266,739		717,879

Appendix II

CESQG Charges



**SCHEDULE OF HAZARDOUS WASTE HANDLING
AND DISPOSAL CHARGES FOR CONDITIONALLY
EXEMPT SMALL QUANTITY GENERATORS**

(Revision date 11/5/99)

Waste Category (Packaging Method)	Example Waste Materials		Per Pint Container¹	Per Quart Container¹	Per 1 Gallon Container¹	Per 5 Gallon Container¹	Other Unit Charges
Antifreeze (Bulked)	Uncontaminated for Recycle						\$1.40/gal
Latex Paint (Bulked)	Latex-based Paints, Stains						\$2.50/gal
Motor Oil (Bulked)	Uncontaminated for Recycle						\$0.28/gal.
Aerosols Hazard Class 2 (Loosepack)	Spray Paints Insecticides Aerosol Cleaners		\$1.65	\$3.30			
Flammable/ Combustible Materials: Fuels Blending Hazard Class 3.0 (Loosepack) (Bulked option for some wastes) ²	<u>Paint-Related Material:</u> Oil- Based Paint/Stains Varnishes	Solvents Thinners	\$0.50	\$1.00	\$3.40	\$20.50	\$2.50/gal. ²
	Adhesives Alcohol Brush Wash Diesel Epoxy Resins Gasoline/Fuels Grease	Glues Ink/Toners Polishes White Gas Methanol Roof Tar Sealers	\$0.50	\$1.00	\$3.75	\$30.00	\$2.50/gal. ²

Waste Category (Packaging Method)	Example Waste Materials		Per Pint Container ¹	Per Quart Container ¹	Per 1 Gallon Container ¹	Per 5 Gallon Container ¹	Other Unit Charges
Corrosives, Oxidizers, Acids, Bases: Neutralization/ Treatment Hazard Class B (Labpack)	Acetic Acid Ammonia Citric Acid Corrosives Potassium Hydroxide Sodium Hydroxide	Ferric Chloride Formic Acid Hydrochloric Acid Hydrofluoric Acid Hypochlorite Caustics	\$1.20	\$2.40	\$9.50	\$47.50	
Poisons, Toxic Materials: Incineration Hazard Class 6, 3(6) (Labpack)	Insecticides Pesticides Flammable Pesticides	Herbicides Toxic Lab Chemicals	\$1.70	\$3.40	\$13.50	\$67.50	
Contaminated Solids, Other Hazardous Materials: Landfill Hazard Class 9, Non-RCRA (Labpack or Loosepack)	Non-RCRA Hazardous Wastes Fertilizers Absorbents		\$0.65	\$1.30	\$5.25	\$26.50	
Reactives Hazard Class 4 (Labpack)	Cyanides Dangerous When Wet	Sulfides Bromine Spontaneously Combustible	\$2.50	\$5.00	\$20.00	\$99.00	
Asbestos (Loosepack)	Double-Bagged Friable Asbestos Wastes						\$120 per cubic yard

Waste Category (Packaging Method)	Example Waste Materials		Per Pint Container¹	Per Quart Container¹	Per 1 Gallon Container¹	Per 5 Gallon Container¹	Other Unit Charges
Household Batteries Hazard Class 8, 9 (Loosepack)	Alkaline Lithium	Nickel Cadmium Silver Oxide					\$0.10 each
Oil Filters (Loosepack)	Automotive and Truck/Tractor Filters						\$1.00 each
Vehicle Batteries (Not packaged)	Unbroken/Non-Leaking Lead-Acid Batteries						No Charge
Fluorescent Tubes (Loosepack)							\$0.15/ft.
Propane Cylinders (Loosepack)	5-Gallon "BBQ" Style					\$5.00	
Propane Cylinders (Loosepack)	Smaller than 5-gallon Cylinders		\$1.40	\$2.75	\$11.00		

¹ Prices are based on container size regardless of how full; containers of other than the specified sizes will be charged at an interpolated or prorated price.

² This rate will be available when the bulking of flammable liquids can be performed at the facility. Flammable liquids that cannot be bulked will be charged the rate based on the container size.

Note: Each Conditionally Exempt Small Quantity Generator (CESQG) shall be charged an administration fee of \$20.00 for each drop-off in addition to the above handling and disposal charges.

(Ord. 229 Exh. A (part), 2004: Ord. 212 § 1 Exh. A, 1999: Ord. 206 Exh. A, 1999

Appendix III

HHW Program History 1997 to Present



