



Approved:

Lilia M. Corona
General Manager

DEPUTY GENERAL MANAGER'S REPORT

TO: Mt. View Sanitary District Board of Directors
FROM: Stacey Ambrose, Deputy General Manager
DATE: March 13, 2025
SUBJECT: Report for February 2025

Consolidation Feasibility

On February 13, GM Corona, DGM Ambrose, DE Elliott, and WOM Biocic met with HDR (feasibility team consultant) to discuss details of the treatment plant and process, including clarification on treatment process flow, wet weather flows, biosolids handling, nutrient compliance, tide gate and marsh operations, and CIP plans. On February 25, GM Corona and DGM Ambrose met with Woodard and Curran (feasibility team consultant) to discuss Moorhen and McNabney Marsh operations and any near future improvement plans.

Valero Pipeline Maintenance

Potential maintenance on a Valero pipeline in Moorhen Marsh was reported to the Board in January. Valero is still pursuing that work, but it is on hold until appropriate permits are issued to Valero by regulatory agencies. Valero was informed that they would need mitigation for their project. On February 14, GM Corona and DGM Ambrose met with Valero staff to discuss options for conducting that mitigation in District marshes. Valero staff were informed that the District has the Mt. Diablo Wetlands Fund as a mechanism to receive mitigation funds, has projects that fit the mitigation requirement to improve water quality or habitat, and is interested in working with Valero to meet their mitigation needs. Valero will report back to the District when they have further information on their next steps.

BACWA = Bay Area Clean Water Agencies
BAPPG = Bay Area Pollution Prevention Group
RWQCB = Regional Water Quality Control Board
NPDES = National Pollutant Discharge Elimination System
CWEA = California Water Environment Association
EPA = Environmental Protection Agency

GM = General Manager
DGM = Deputy General Manager
POC = Public Outreach Coordinator
DE = District Engineer
WOM = Wastewater Operations Manager
ASM = Administrative Services Manager

Alhambra Watershed Council

The Alhambra Watershed Council, a local stakeholder group that supports the health and vitality of the Alhambra Creek Watershed, held its monthly meeting on February 4, 2025. This meeting focused on upcoming events announcements by local groups including MVSD, Friends of Alhambra Creek, Contra Costa Resource Conservation District, and the National Park Service. Diablo Firesafe Council made a guest presentation on their Regional Priority Plan, which was created to identify and prioritize projects at the landscape or watershed level to address forest health and wildfire risks in the region. Meeting attendees were encouraged to submit proposals for the plan's associated grant program.

AT&T

The District has been working with AT&T to increase its internet speed since November 2024. The increase in the internet speed was completed on January 13, 2025, with the phone line migration to the new equipment scheduled for February 3, 2025. AT&T again rescheduled, but the migration was finally completed on February 12, 2025. Due to this service upgrade, there have been issues with the AT&T invoices related to the switch and technical support. The District is being assigned a dispute agent to rectify these issues.

IT Quarterly Business Review

POC Mitchell met with Parachute, the District's IT services provider, on February 4, 2025, for a Q1 Technology Business Review. This included a review of the IT audits of the District's hardware, which is a monthly overview of the managed equipment, Microsoft licenses, and alerts for equipment requiring warranty extensions and/or replacement. The review also included cloud hosting, Windows 11 updates, and budgeting for FY2026. The next quarterly review is scheduled for April 2025.

Community Advisory Group (CAG)

The Community Advisory Group met on February 19, 2025. Items discussed included an update on the feasibility study, upcoming Earth Day celebrations and cleanup events, and a review of the article, "Do You Know Where Your Money Goes?" from the February newsletter. The CAG consists of a handful of participants who are served by the District. The meetings typically have a subset of the participants attending.

Mt. View Monitor

The Mt. View Monitor, MVSD's quarterly newsletter, was sent out in February via mail to 18 recipients and online to 208 recipients. The newsletter featured articles on the State of the District, Earth Day celebrations, pollution prevention, spring gardening

BACWA = Bay Area Clean Water Agencies
BAPPG = Bay Area Pollution Prevention Group
RWQCB = Regional Water Quality Control Board
NPDES = National Pollutant Discharge Elimination System
CWEA = California Water Environment Association
EPA = Environmental Protection Agency

GM = General Manager
DGM = Deputy General Manager
POC = Public Outreach Coordinator
DE = District Engineer
WOM = Wastewater Operations Manager
ASM = Administrative Services Manager

tips, critter of the quarter, the employee highlight, a feasibility study update, and a breakdown of the annual residential rate in “Do You Know Where Your Money Goes?”

Reports Submitted

- Monthly SMR/DMR, required by NPDES, reports influent, effluent, and marsh water quality results for all routine monitoring.
- Quarterly Biosolids, required by CalRecycle, reports biosolids dewatering and off hauled.
- Nutrient Compliance Schedule Milestones and Progress Reporting, required by Nutrient Watershed Permit, reports the District's plans to meet the final permit limit, effective 2034.

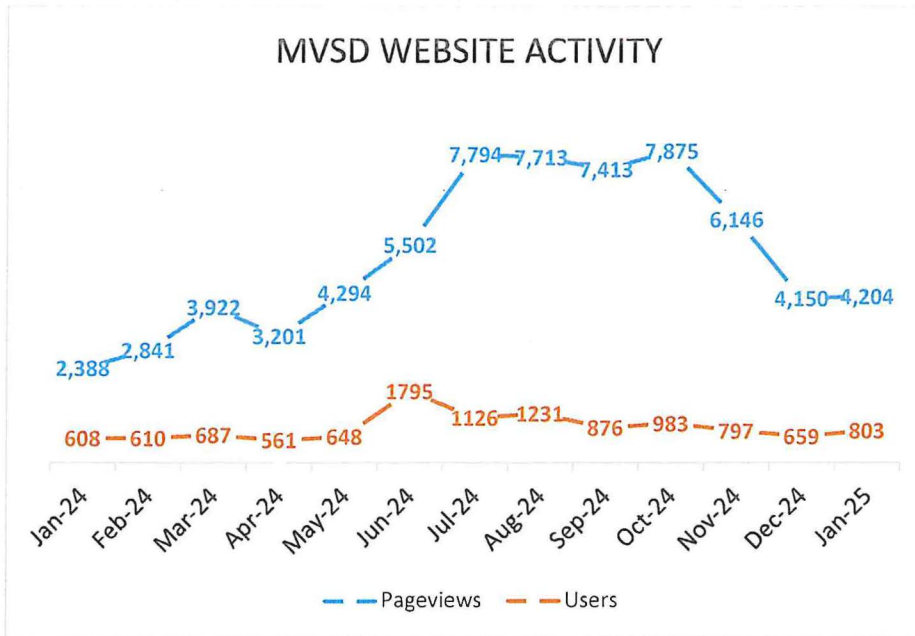
Training

POC Mitchell attended the following training:

- ADA Dashboard Tool – provided by Streamline on February 24, 2025. Regulations from the Department of Justice require Special Districts' websites to be ADA compliant based on the Web Content Accessibility Guidelines (WCAG) 2.1 Level AA by April 26, 2027. The dashboard tool provided by Streamline scans each page, file, image, and video on the District's website with these guidelines and provides a report on items that do not meet guidelines and need remediation.
 - The District's current ADA status is 80% compliant with all images, videos, and pages. PDF documents, primarily agendas and minutes, need to be archived and/or remediated before the DOJ deadline. POC Mitchell is reviewing best practices for remediation and available software/programs that may also assist District staff.

MVSD Website

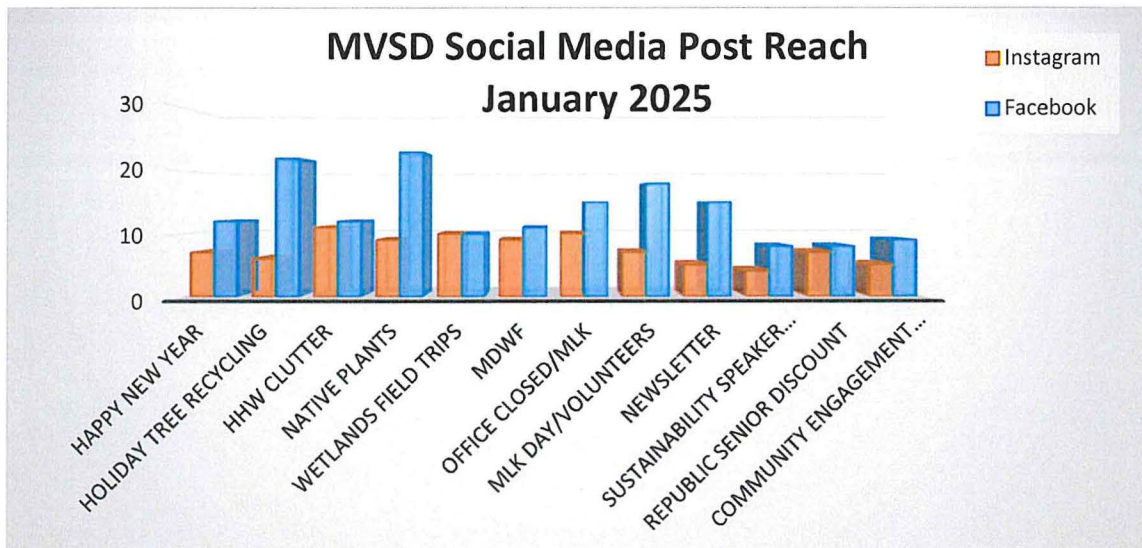
In January, the number of pageviews and the number of users slightly increased from December. However, from January 2024 to January 2025, the number of pageviews increased a substantial 76% and the number of users increased 32%.



Public Messaging

The District engaged with the public in January through messaging featured in:

- MVSD Facebook and Instagram
 - On Facebook, reach and engagement decreased, and the number of followers increased.
 - On Instagram, reach decreased, the number of followers increased, and engagement remained the same.



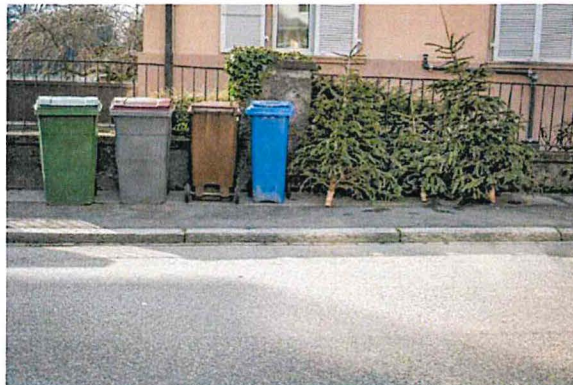
BACWA = Bay Area Clean Water Agencies
 BAPPG = Bay Area Pollution Prevention Group
 RWQCB = Regional Water Quality Control Board
 NPDES = National Pollutant Discharge Elimination System
 CWEA = California Water Environment Association
 EPA = Environmental Protection Agency

GM = General Manager
 DGM = Deputy General Manager
 POC = Public Outreach Coordinator
 DE = District Engineer
 WOM = Wastewater Operations Manager
 ASM = Administrative Services Manager

- The two posts with the most reach in January were:
 - Native Plants
 - Stop! Don't rip those plants out! They may look dead, but they're probably just out of season. When planting your garden this spring, think about what it will look like all year long, and make sure to stock it with California natives!



- Holiday Tree Recycling
 - It's time to take down your holiday tree, but where does it go? Republic Services will provide curbside pickup on your regular garbage day the week of January 13-17. This is for unflocked trees only. Tree stands and decorations must be removed. To learn more, visit <http://mvsd.org/tree-recycling>.

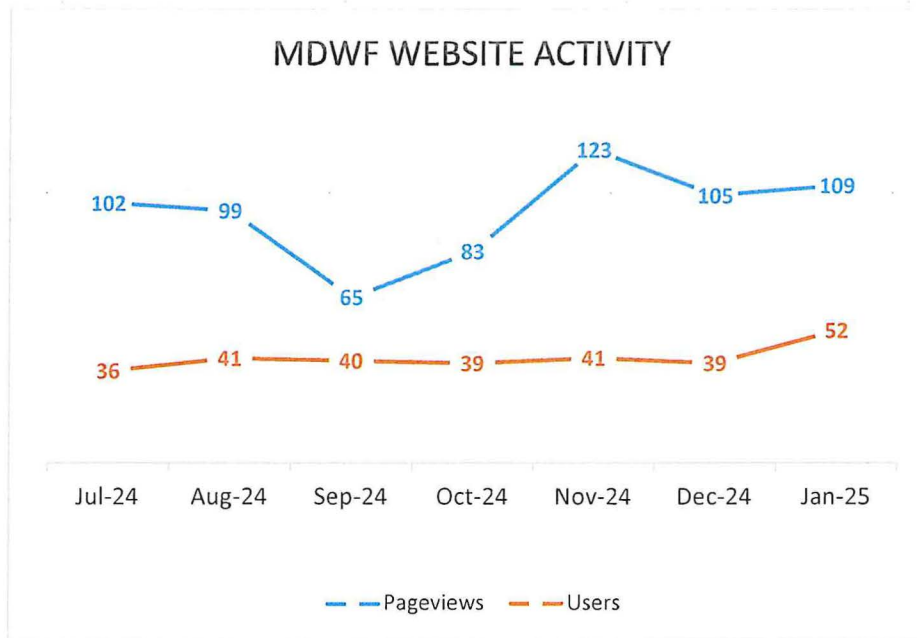


Mt. Diablo Wetlands Fund (MDWF) Website

In January, the number of pageviews slightly increased, and the number of users had about a 33% increase.

BACWA = Bay Area Clean Water Agencies
BAPPG = Bay Area Pollution Prevention Group
RWQCB = Regional Water Quality Control Board
NPDES = National Pollutant Discharge Elimination System
CWEA = California Water Environment Association
EPA = Environmental Protection Agency

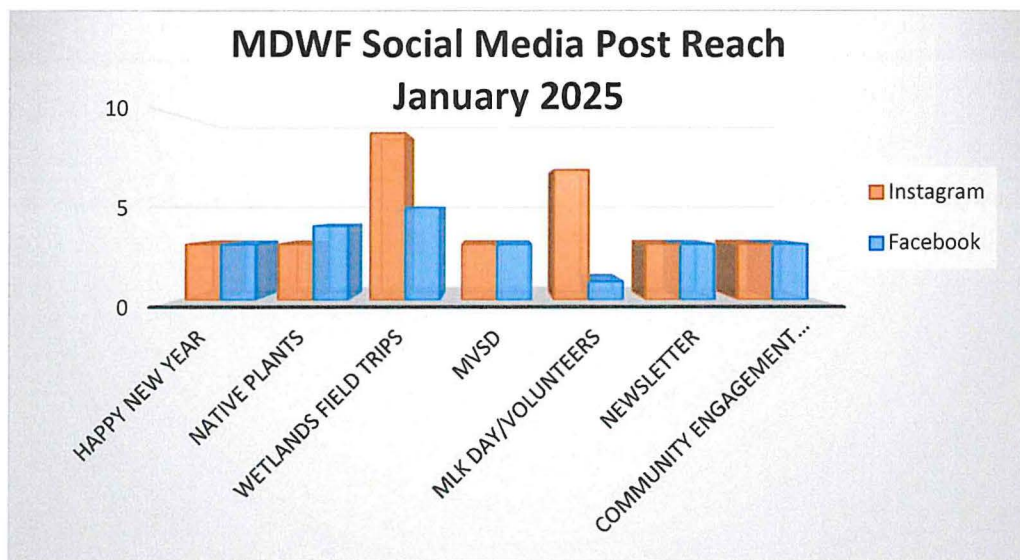
GM = General Manager
DGM = Deputy General Manager
POC = Public Outreach Coordinator
DE = District Engineer
WOM = Wastewater Operations Manager
ASM = Administrative Services Manager



Public Messaging

MDWF engaged with the public in January through messaging featured in:

- MDWF Facebook and Instagram
 - On Facebook, reach increased, engagement decreased, and the number of followers remained the same.
 - On Instagram, reach decreased, the number of followers increased, and engagement remained the same.



BACWA = Bay Area Clean Water Agencies
BAPPG = Bay Area Pollution Prevention Group
RWQCB = Regional Water Quality Control Board
NPDES = National Pollutant Discharge Elimination System
CWEA = California Water Environment Association
EPA = Environmental Protection Agency

GM = General Manager
DGM = Deputy General Manager
POC = Public Outreach Coordinator
DE = District Engineer
WOM = Wastewater Operations Manager
ASM = Administrative Services Manager

- The two posts with the most reach in January were:
 - Wetlands Field Trips
 - Don't miss out on the Wetlands Field Trips this spring at Moorhen Marsh! Get your class signed up today for a field trip this spring: <https://www.mvsd.org/wetlands-education-program> (this was a video)



- MLK Day/Volunteers
 - In honor of Dr. Martin Luther King Jr., we're encouraged to volunteer to improve our communities. We celebrate those who are out there today and every day making a difference.



BACWA = Bay Area Clean Water Agencies
BAPPG = Bay Area Pollution Prevention Group
RWQCB = Regional Water Quality Control Board
NPDES = National Pollutant Discharge Elimination System
CWEA = California Water Environment Association
EPA = Environmental Protection Agency

GM = General Manager
DGM = Deputy General Manager
POC = Public Outreach Coordinator
DE = District Engineer
WOM = Wastewater Operations Manager
ASM = Administrative Services Manager